








**Thank you for your purchase of Premio DSS424J-S3 JBOD Storage System!**

**1. Check the Content** of the box. Please confirm that your package contains the following:

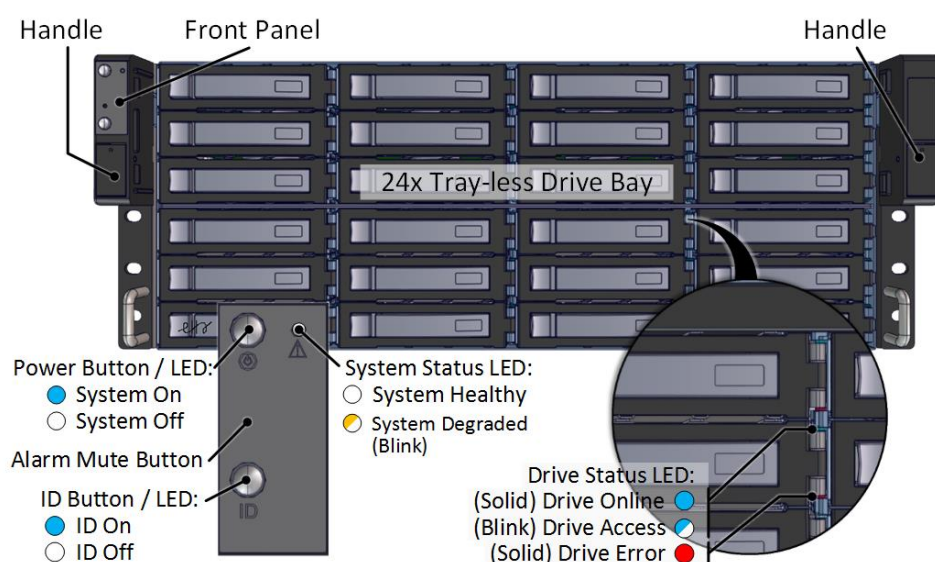
#	Description	Image / Description	Qty
1	DSS424J Enclosure		1
2	Bezel		Opt.
3	Anti-static bags*	For drive or drive tray	16
4	Fix mount rail set		1 set
5	Slide Rail Kit + Screws		Opt.
6	Power Cable*		2
7	Serial Cable*		1
8	This Quick Guide		1
9	Packaging		1 set

\* Inside the accessories box. Box may consist of screw sets for rail kit or drives. If any items are missing, please contact your reseller or sales rep.

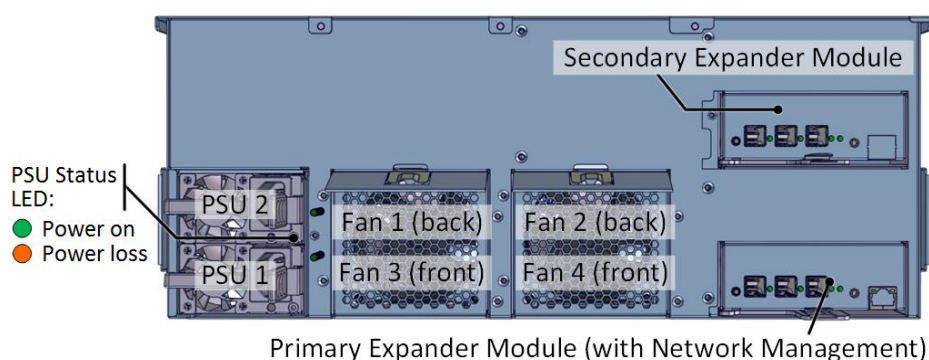
## 2. Get Familiar with the Unit.

DSS424J-S3 features 24x tray-less 3.5" SAS hot-swap HDD bays, dual 12Gbps SAS expanders, 550W platinum redundant power supply units.

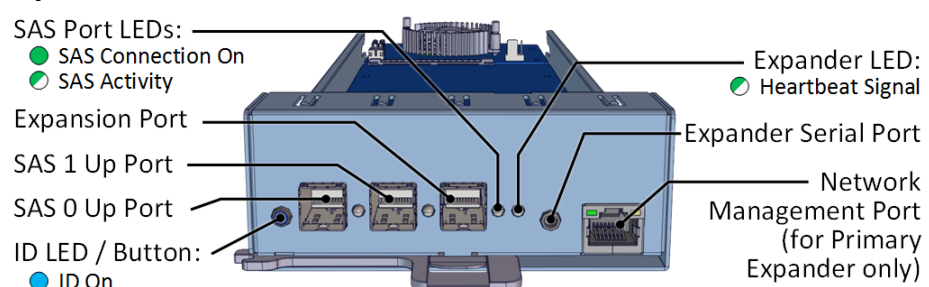
### Front view of the unit



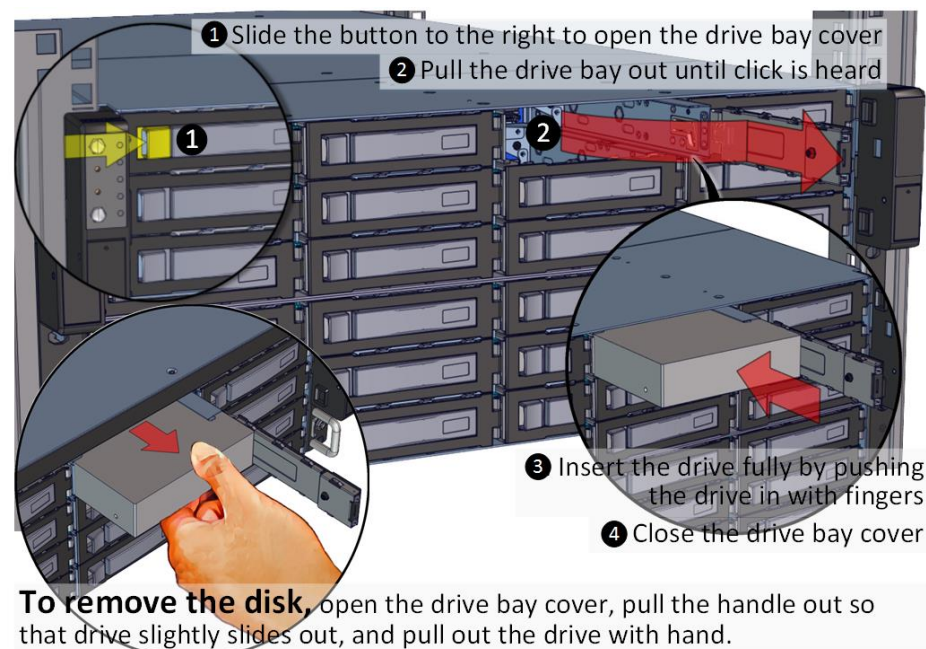
### Rear view of the unit



### Expander Module

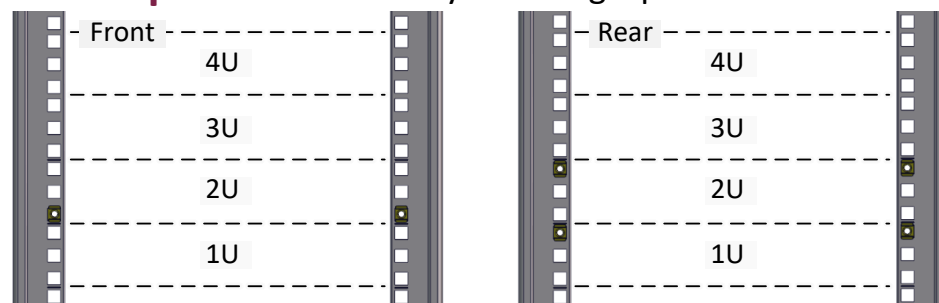


**3. Install 3.5" Drives** to the unit as illustrated. It is suggested to install HDDs after the unit is mounted to the rack.

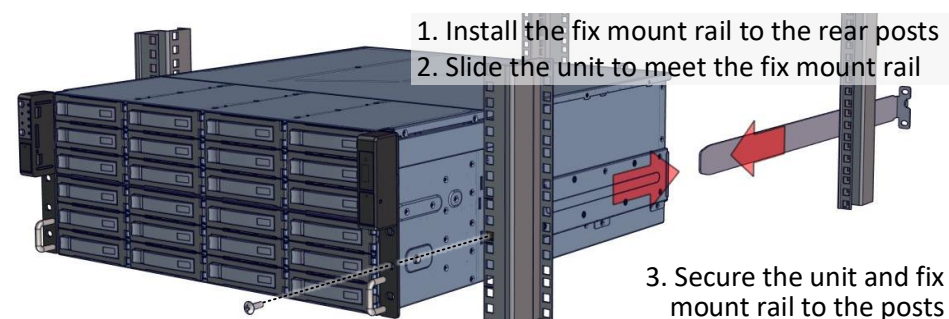


## 4. Mounting the Unit using Fix Mount Rail

**4a. Prepare the Post** by installing square nuts.

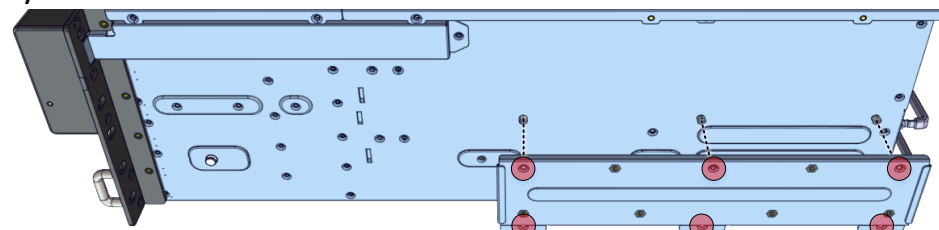


**4b. Mount the Unit** to the rack.



## 5. Mounting the Unit using Tool-less Rail

**5a. Remove Fix Mount Rail Covers** from the system.



**5b. Remove the Inner Rails** from the slide rails.



Installation and service of this product should be conducted by a trained personnel to avoid bodily injury from electric shock or heavy object



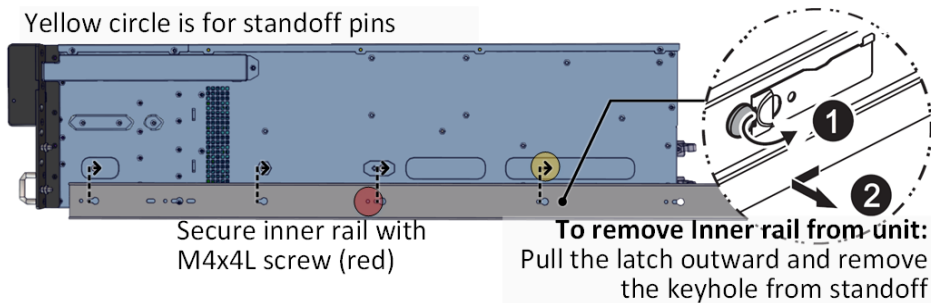
Observe ESD (Electrostatic Discharge) practices during integration to avoid possible damage to the board and / or other components



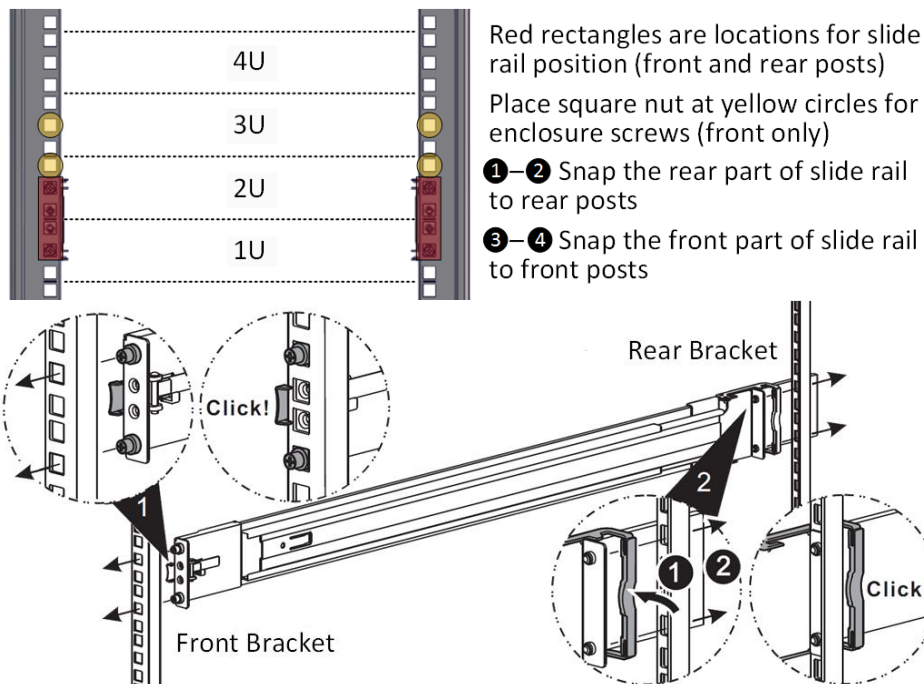
- 1-2 Pull the inner rails out. Pull the blue release tab when it hits a stop.
- 3-4 Keep extending inner rail and pull the white detach tab when it hits the second stop
- 5-6 Unretract the mid rail by pulling the latch on the mid rail

### 5c. Install Inner Rails to the enclosure.

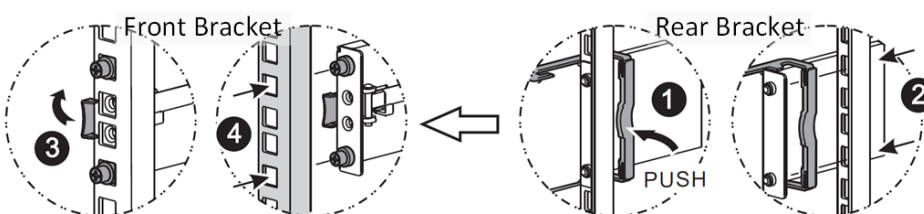
Yellow circle is for standoff pins



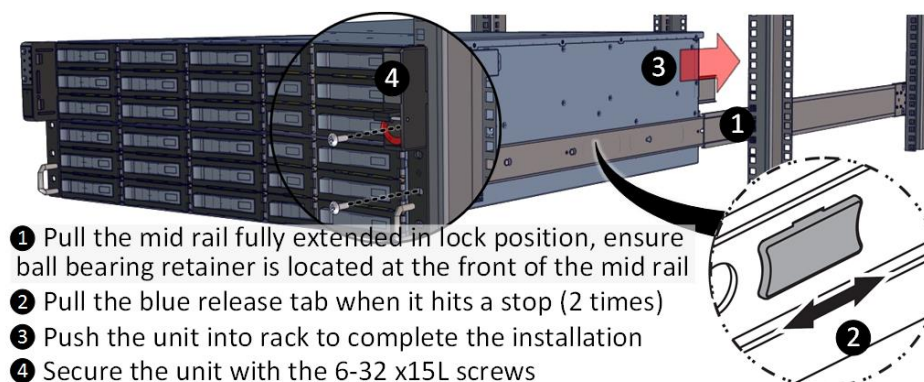
### 5d. Install the Outer Rails to the Rack as follows:



To remove slide rails, use the latches to undo the assembly as follows:



### 5e. Install the Unit to the Rack as follows:



For a complete instruction on how to install unit to the rack, please follow the Slide Rail Installation Guide.



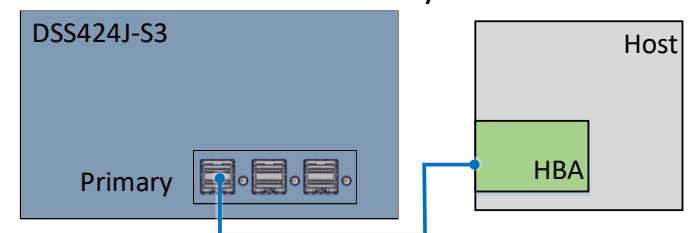
At least two people are recommended for mounting process.

### 6. Drive Mapping of DSS424J-S3 is as follows:

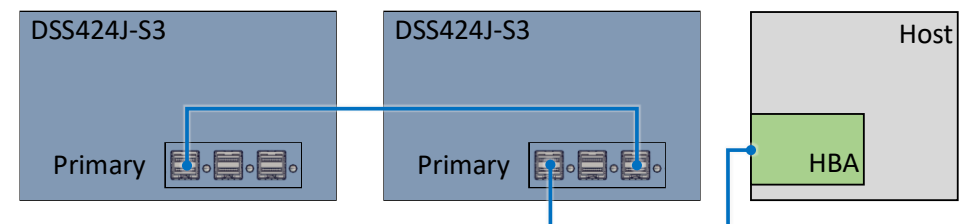


### 7. Establish SAS connection with host, client, or switch. Refer to the system configurations below to decide on which port to use.

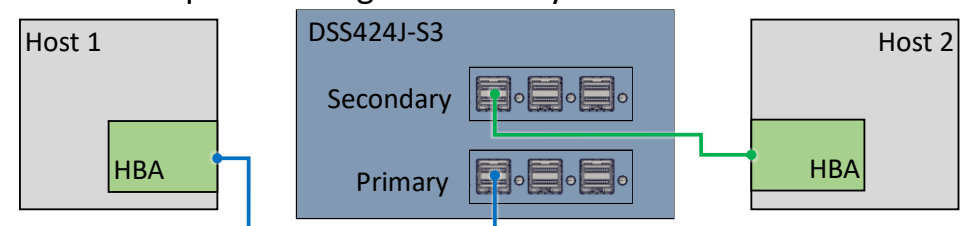
**Single expander mode:** SAS drives are not required, no high availability is possible with this configuration. The SAS HBA/RAID controller sees all 24 HDDs from DSS424J-S3. Connect SAS cable to Host Port of the Primary Module.



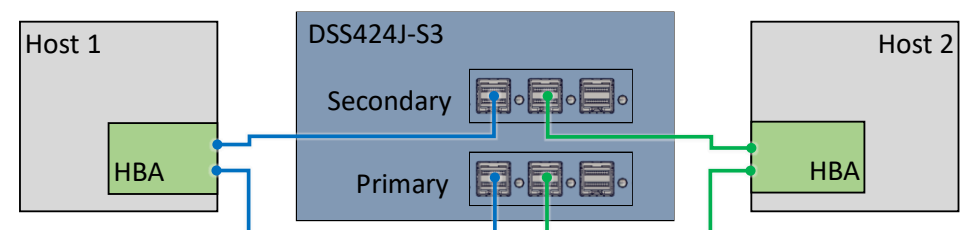
**Daisy-chain mode:** a single expander mode with expandable storage. The SAS HBA/RAID controller sees the collective HDDs from the daisy-chained DSS424J-S3s. Connect the Expander Port from the first unit to the Host Port of the second unit and so on.



**Dual expander mode:** SAS drives are required. Two clients are able to connect to the unit storage device due to the dual port nature of the SAS drives. This configuration provides a redundant path and high availability.



**Clustered Storage Spaces mode:** SAS drives are required. In the below configuration, both hosts will have all the paths to all 24x disks at the same time.



### 8. Press the Power Button on the front of the unit after plugging AC cables.



**9. Access the Serial Console** (when necessary) by connecting RS-232 serial cable to the one of the console ports. Use a terminal console with baud set 115200, 8, N, 1, N. Refer to User's Manual for further detail and how to set up Ethernet Management Port.

