
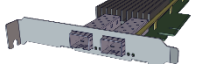
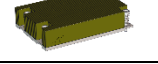







**Congratulation on your purchase of Premio DSS424S-UN Storage Server System!**

**1. Check the Content** of the box. Please confirm that your package contains the following:

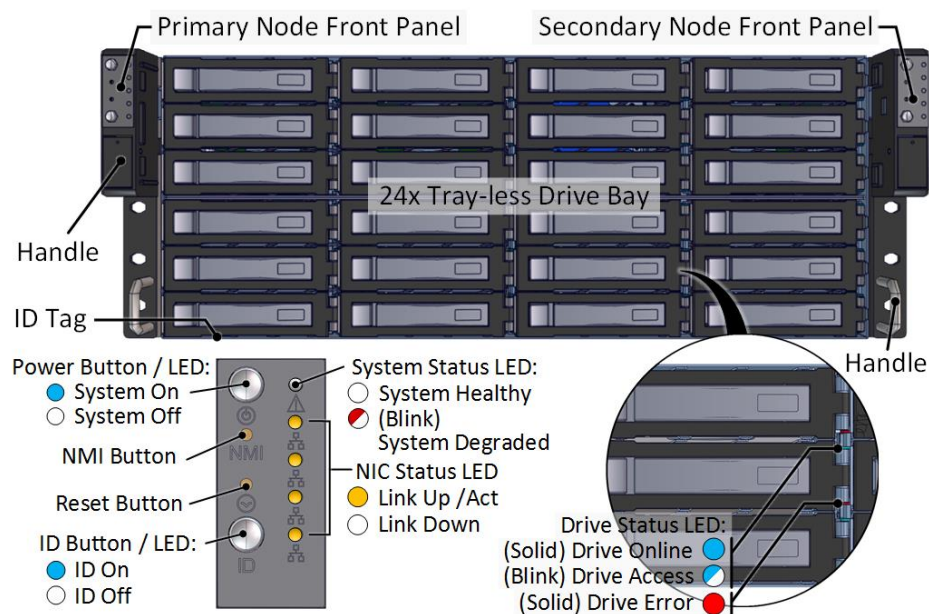
#	Description	Image / Description	Qty
1	DSS424S-UN Enclosure		1
2	Motherboard	Gigabyte MZ31-AR0	2
3	CPU and memory	AMD Epyc CPU and DDR4	Opt.
4	IO Cards		Opt.
5	Heatsink		2
6	Slide Rail Kit + Screws		1 set
7	Power Cable*		2
8	Serial Cable*		1

\* Inside the accessories box. Box may consist of screw sets for rail kit or drives. If any items are missing, please contact your reseller or sales rep.

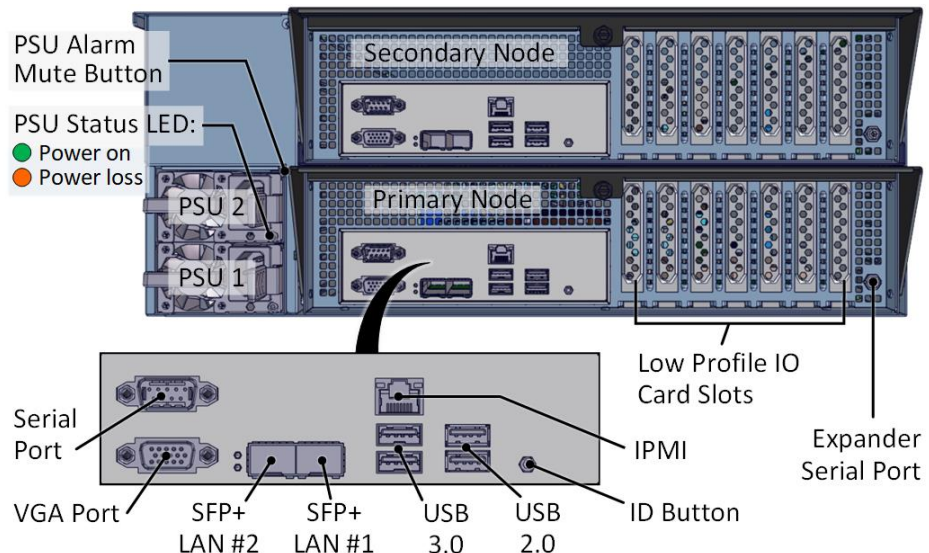
## 2. Get Familiar with the Unit.

DSS424S-UN is a redundant server supporting dual Intel processor with a front tray-less 24x 3.5" HDD storage, and rear low-profile IO cards in a 4U space. Two Gigabyte motherboards (MZ31-AR0) and internal cabling are preinstalled. IO cards, CPU, and memory are preinstalled upon request.

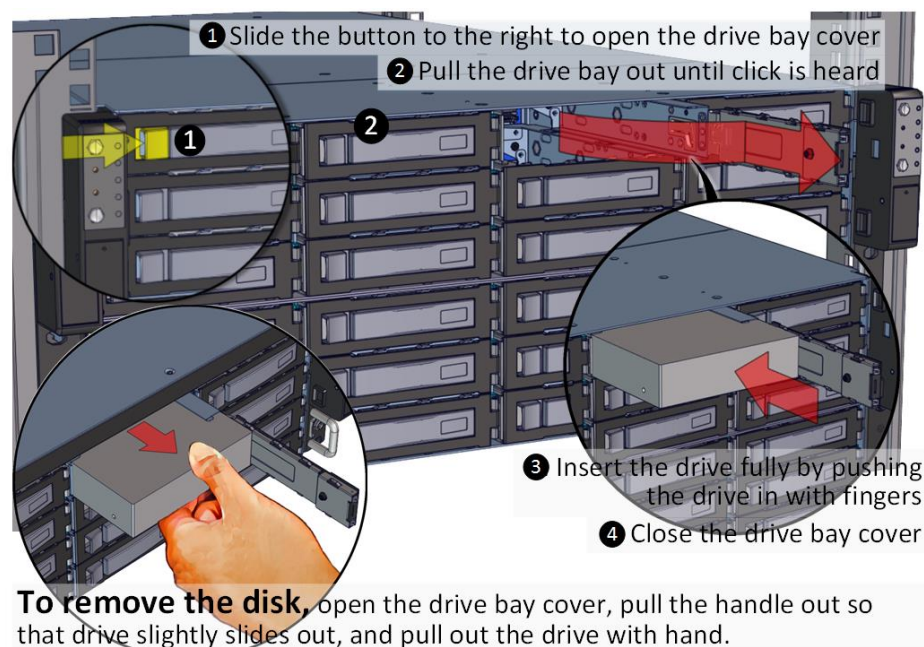
### Front View of the Unit



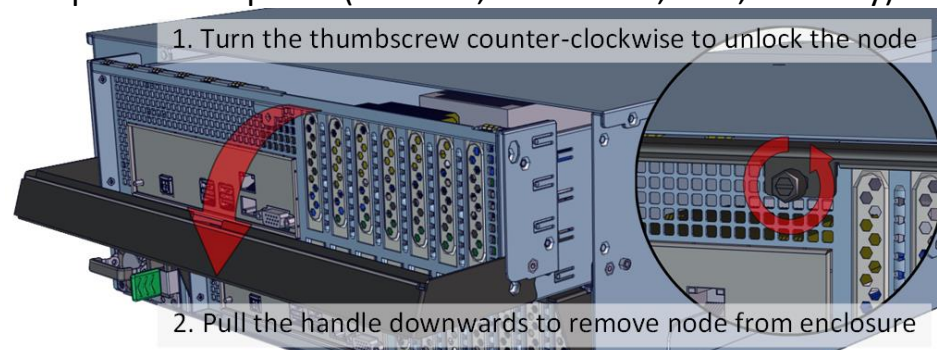
### Rear View of the Unit



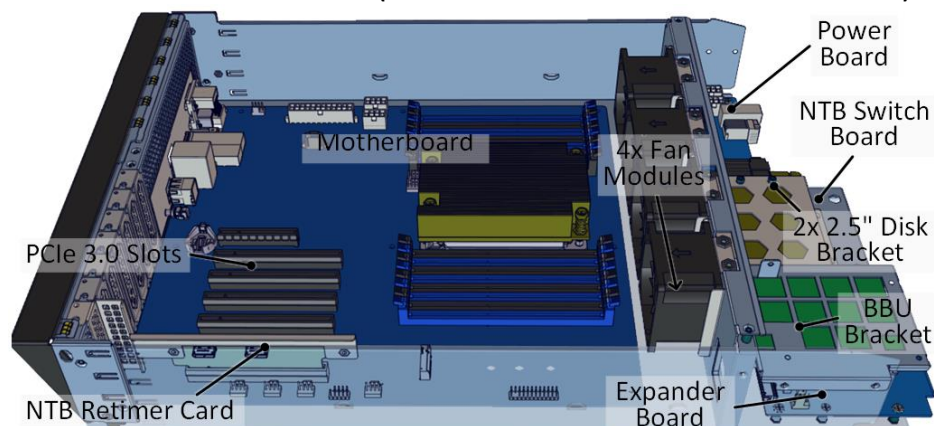
**3. Install 3.5" Drives** to the unit as illustrated. It is suggested to install HDDs after the unit is mounted to the rack.



**4. Remove the Controller Node** to install any components required (IO cards, mezzanine, CPU, memory).



**5. Inspect the Controller Node.** The components comprise of a Gigabyte motherboard, an expander board, IO card, an NTB retimer board, NTB switch board, power board, 4x internal fan modules (all connected to the motherboard).



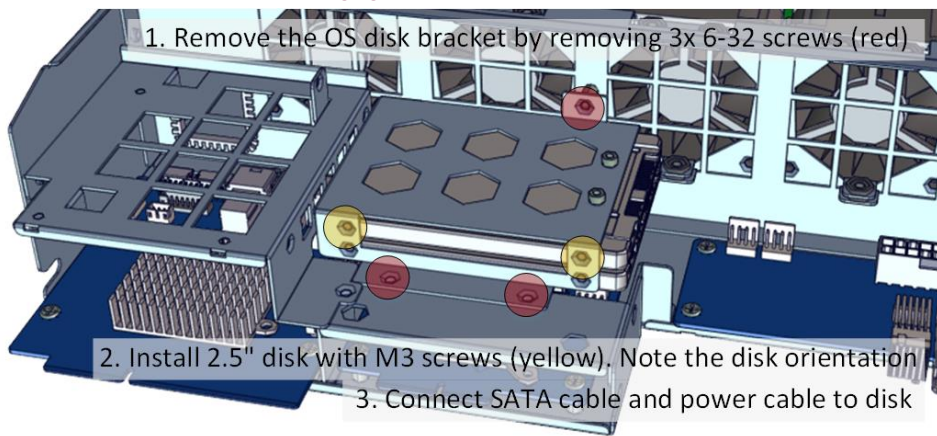
Installation and service of this product should be conducted by a trained personnel to avoid bodily injury from electric shock or heavy object



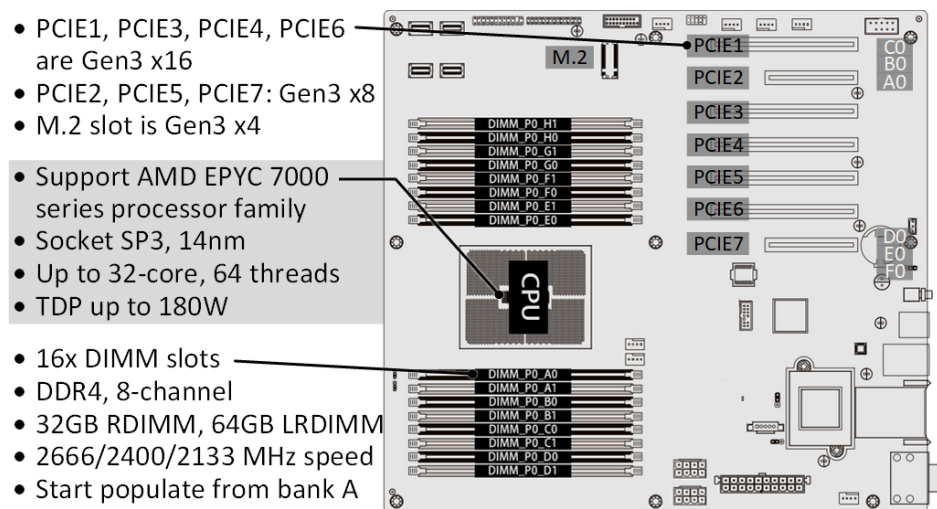
Observe ESD (Electrostatic Discharge) practices during integration to avoid possible damage to the board and / or other components



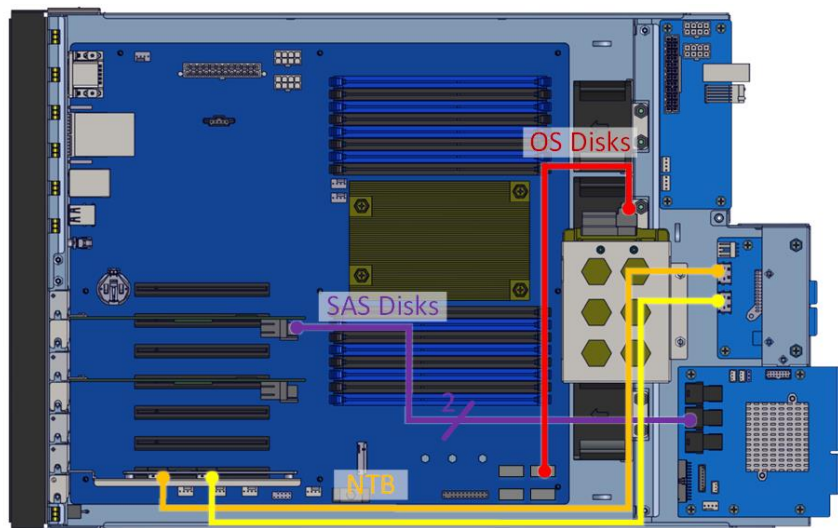
## 6. Install OS disk(s) if required as follows:



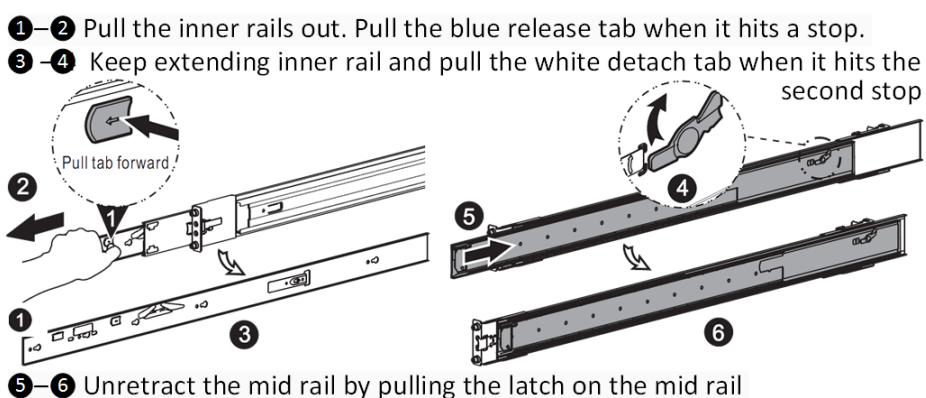
## 7. Install Motherboard Components (CPU, heatsink, memory) using the guidelines below. For further details, refer to the motherboard TPS.



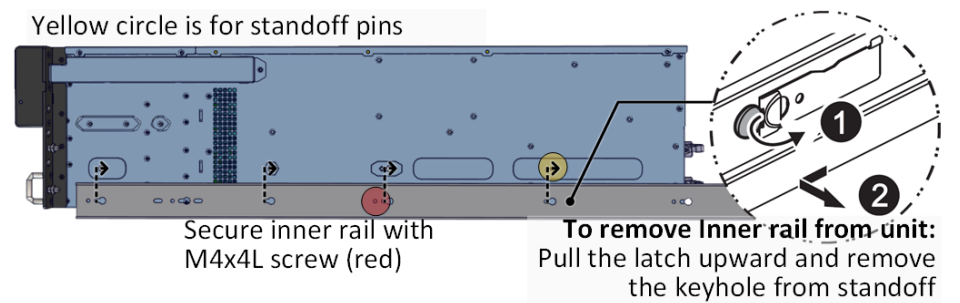
## 8. Inspect Internal Cabling as example below:



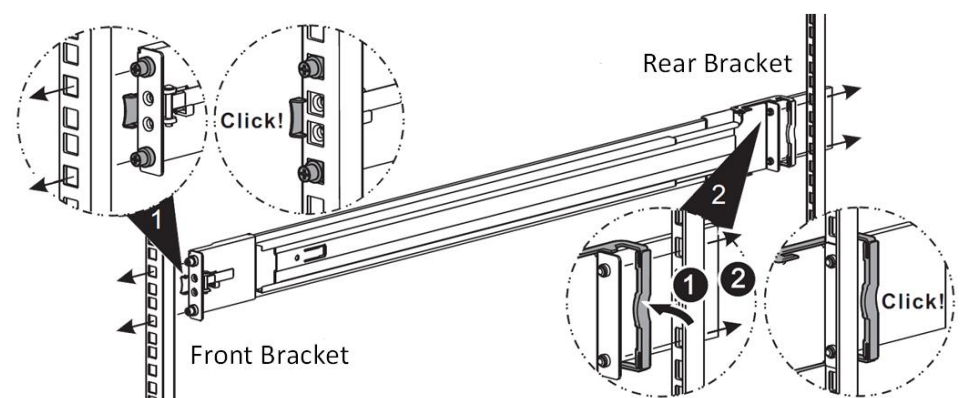
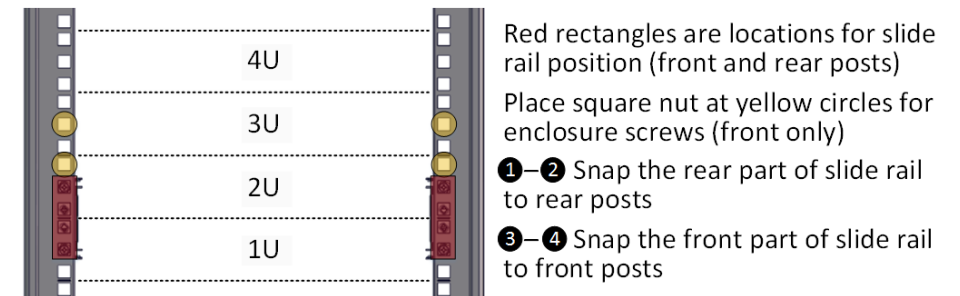
## 9. Remove the Inner Rail from the slide rail.



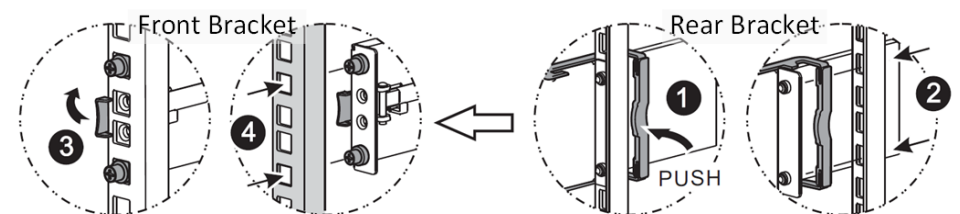
## 10. Install Inner Rails to the enclosure.



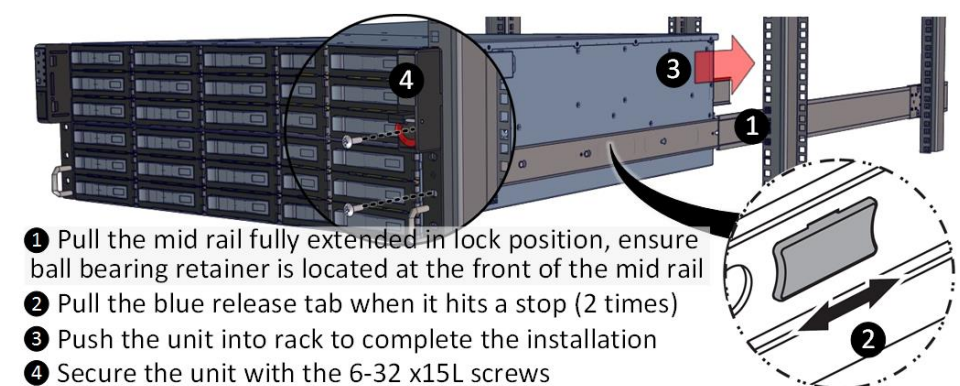
## 11. Install the Outer Rails to the Rack as follows:



To remove slide rails, use the latches to undo the assembly as follows:



## 12. Install the Unit to the Rack as follows:



For a complete instruction on how to install unit to the rack, please follow the Slide Rail Installation Guide.

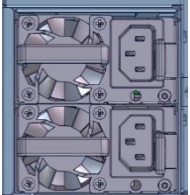


At least two people are recommended for mounting process. Insert HDDs after unit is mounted.

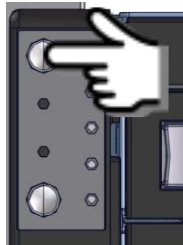
### 13. Drive Mapping of DSS424S-UN is as follows:



### 14. Plug in the Power Cords to the AC receptacles on the back of the unit.



### 15. Press the Power Button on the front of the unit and for the system to boot up. Left panel for primary node, right panel for 16secondary node.



### 16. Access the Serial Console (when necessary) by connecting RS-232 serial cable to the one of the console ports. Use a terminal console with baud set 115200, 8, N, 1, N. Refer to User's Manual for further detail and how to set up Ethernet Management Port.

