
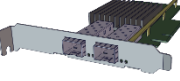
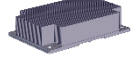







Congratulation on your purchase of the Premio DSS316S-D5 Storage Server System!

1. Check the Content of the box. Please confirm that your package contains the following:

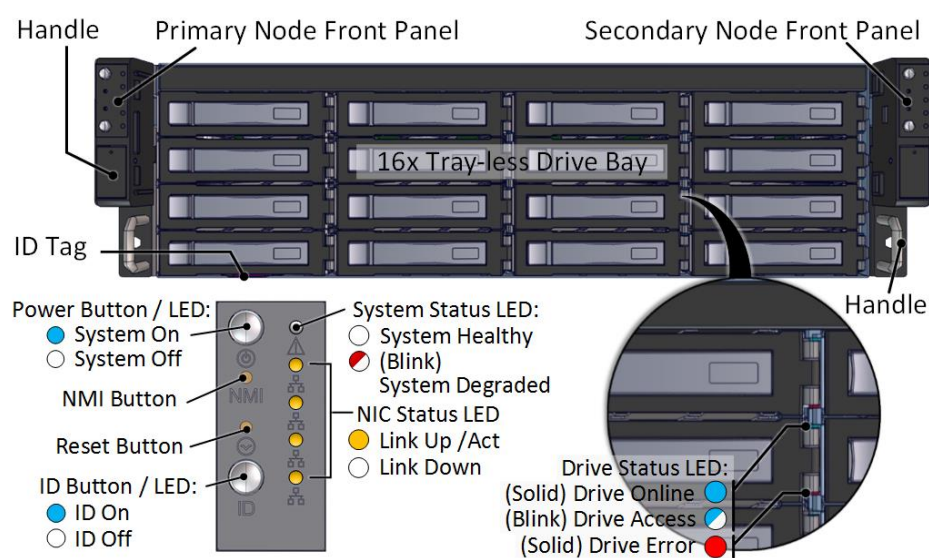
#	Description	Image / Description	Qty
1	DSS316S-D5 Enclosure		1
2	Motherboard	Tyan DP motherboard	2
3	CPU and memory	Intel Skylake and DDR4	Opt.
4	IO Cards		Opt.
5	Heatsink		2
6	Slide Rail Kit + Screws		1 set
7	Power Cable*		2
8	Serial Cable*		1

* Inside the accessories box. Box may consist of screw sets for rail kit or drives. If any items are missing, please contact your reseller or sales rep.

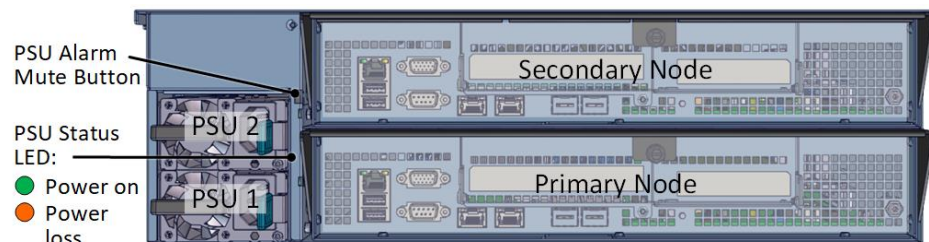
2. Get Familiar with the Unit.

DSS316S-D5 is a redundant server supporting dual Intel Skylake processor with a front tray-less 16x 3.5" HDD storage in a 3U space. Two Tyan S7106 motherboards, and internal cabling are preinstalled. Other motherboard model, IO cards, CPU, and memory can be preinstalled upon request.

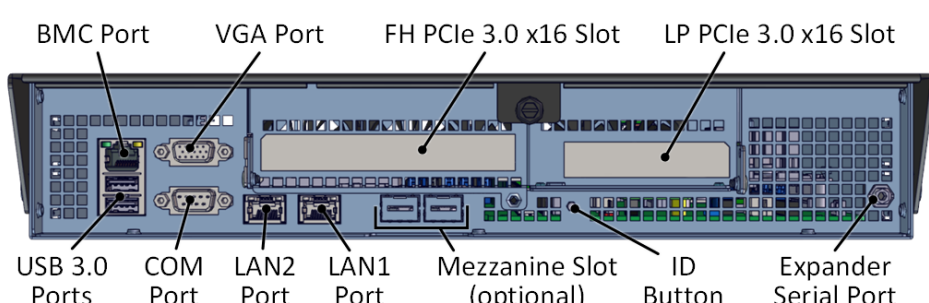
Front View of the Unit



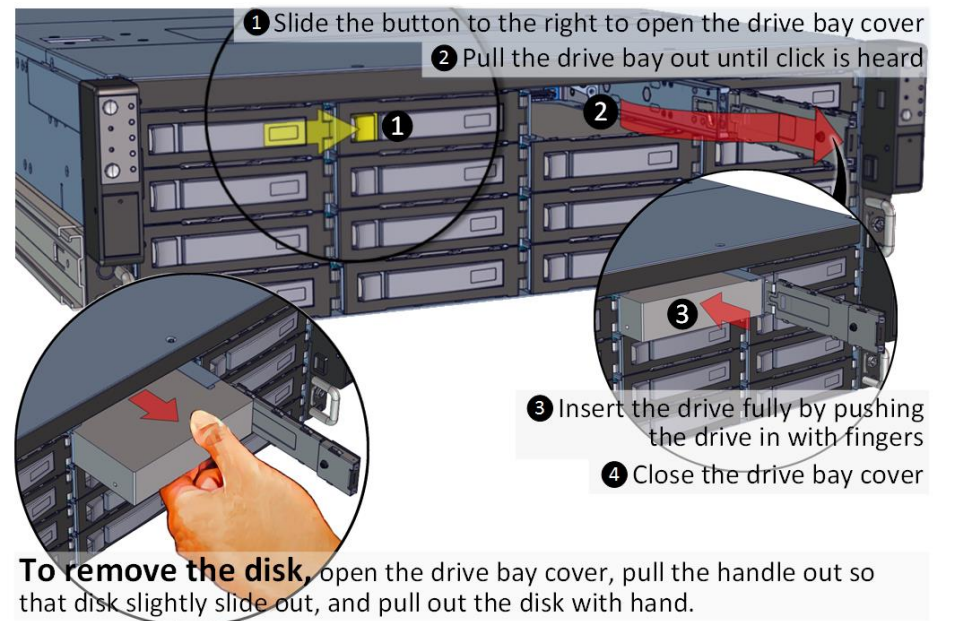
Rear View of the Unit



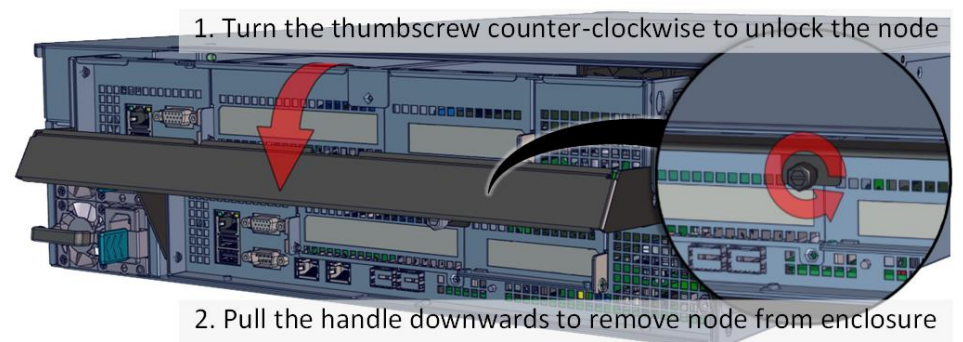
Controller Node



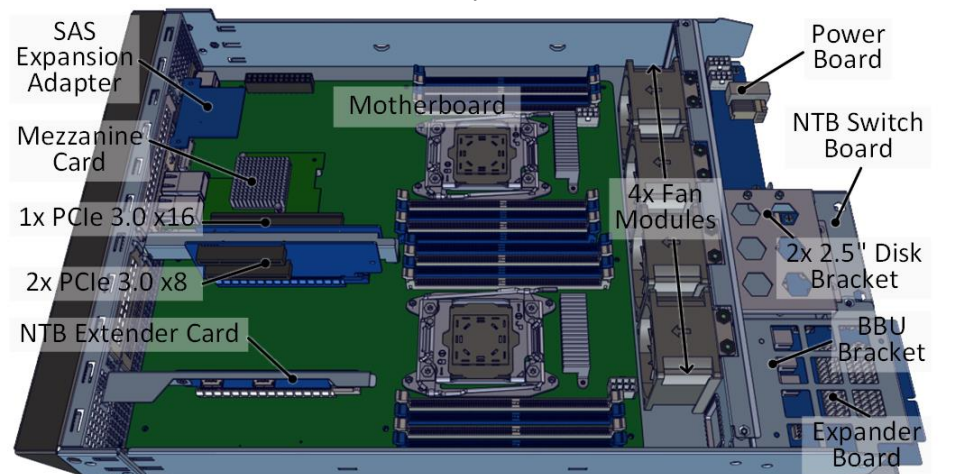
3. Install 3.5" Drives to the unit as illustrated. It is suggested to install HDDs after the unit is mounted to the rack.



4. Remove the Controller Node to install any components required (IO cards, mezzanine, CPU, memory).



5. Inspect the Controller Node. The components comprise of a Tyan motherboard, an expander board, an NTB switch board, power board, 4x internal fan modules (all connected to the motherboard).



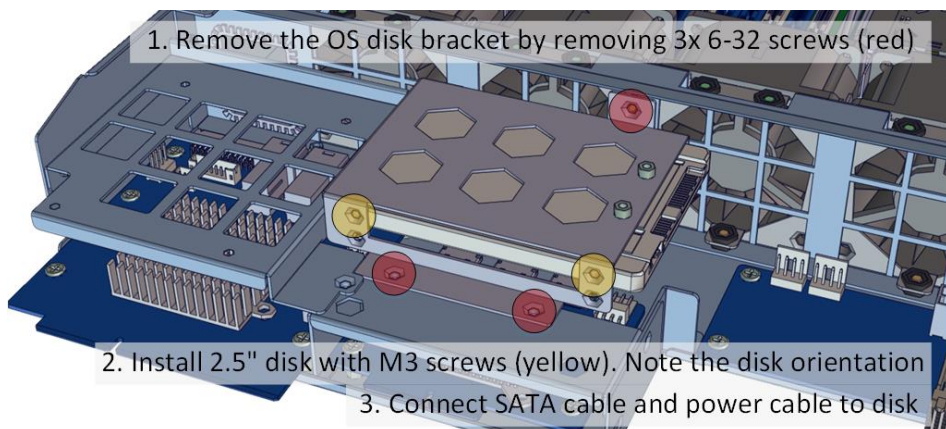
6. Install OS disk(s) if required as follows:



Installation and service of this product should be conducted by a trained personnel to avoid bodily injury from electric shock or heavy object

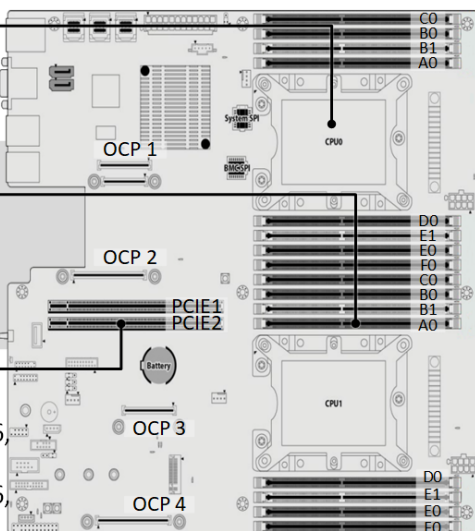


Observe ESD (Electrostatic Discharge) practices during integration to avoid possible damage to the board and / or other components



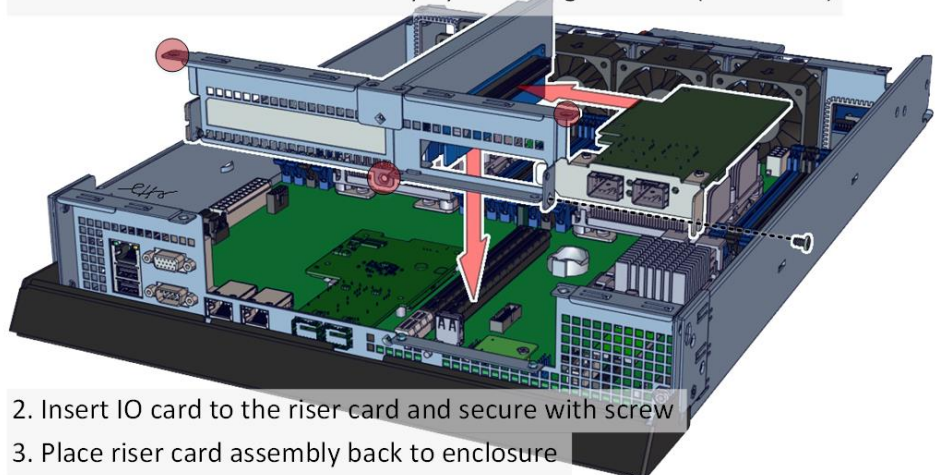
7. Install Motherboard Components (CPU, heatsink, memory) using the guidelines below. For further details, refer to the motherboard user's guide.

- Support for Intel Xeon Skylake CPU
- Dual LGA3647
- Max up to 205W TDP
- Chipset PCH Intel C622
- Support 8+8 DIMM slots
- Up to 512GB RDIMM, 1TB LRDIMM, 2TB LRDIM 3DS
- 6 Channels per CPU
- Populate from A0, B0, C0, D0, E0, F0, B1, E1
- Two PCIe Gen3 x24 slots
- PCIe1 f/ CPU1, PCIe2 f/ CPU0
- OCP2 is Gen3 x8, OCP1+2 is Gen3 x16, f/ CPU0
- OCP4 is Gen3 x8, OCP3+4 is Gen3 x16, f/ CPU1

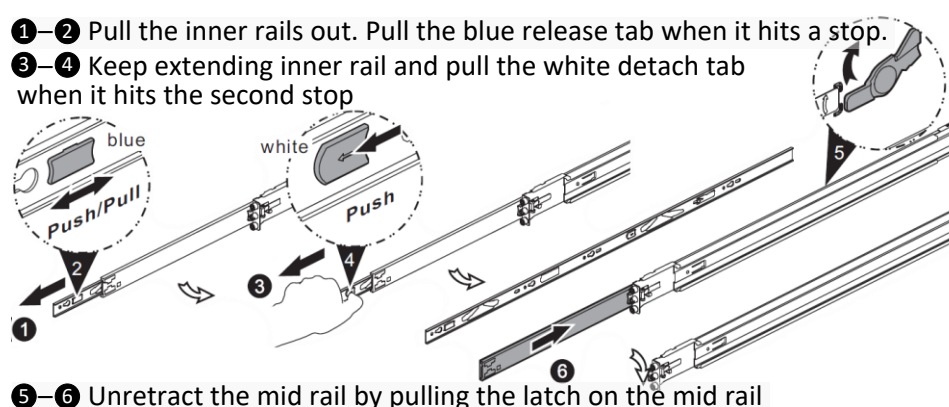


8. Install IO cards to the motherboard tray as follow:

1. Remove the riser card assembly by removing 3 screws (red circles)

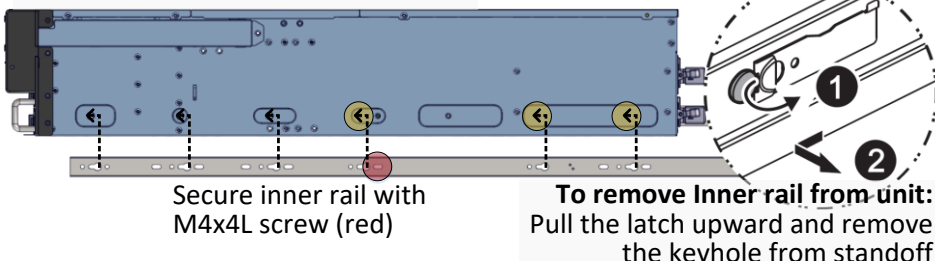


9. Remove the Inner Rail from the slide rail.

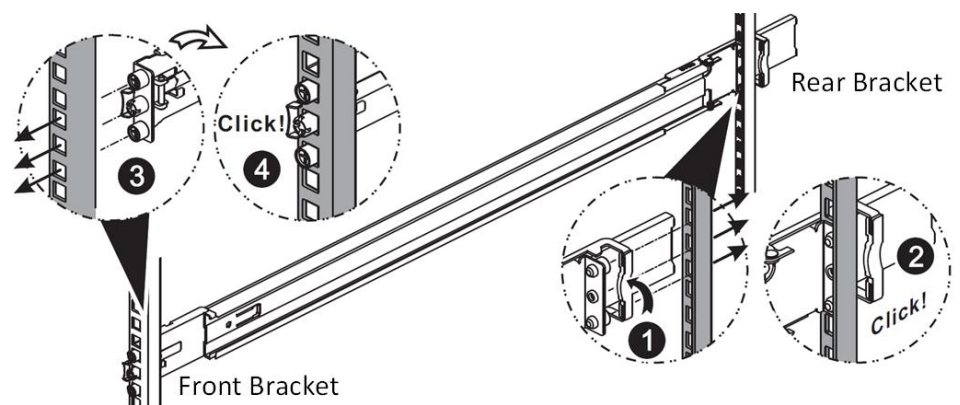
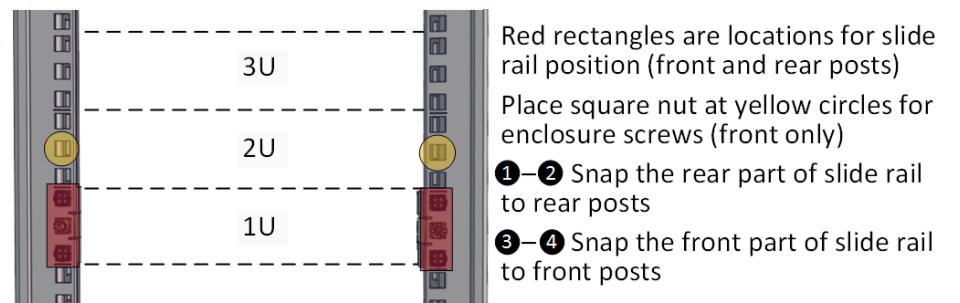


10. Install Inner Rails to the enclosure.

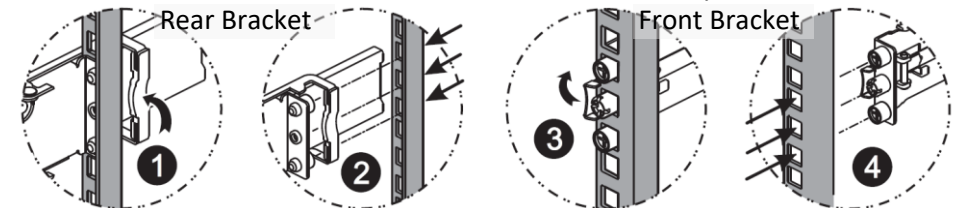
Yellow circles are for standoff screws



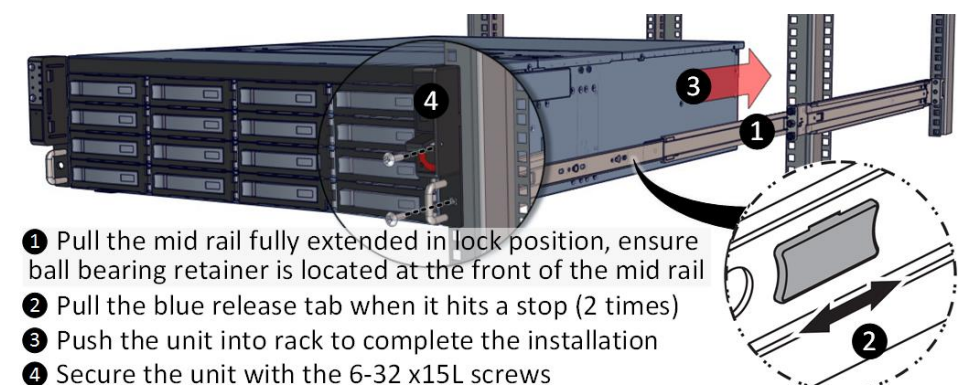
11. Install the Outer Rails to the Rack as follows:



To remove slide rails, use the latches to undo the assembly as follows:



12. Install the Unit to the Rack as follows:



For a complete instruction on how to install unit to the rack, please follow the Slide Rail Installation Guide.

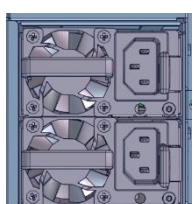


At least two people are recommended for mounting process. Insert HDDs after unit is mounted.

13. Drive Mapping of DSS316S-D5 is as follows:



14. Plug in the Power Cords to the AC receptacles on the back of the unit.



15. Press the Power Button on the front of the unit and for the system to boot up.



Left panel for primary node, right panel for secondary node.

16. Access the Serial Console (when necessary) by connecting RS-232 serial cable to the one of the console ports. Use a terminal console with baud set 115200, 8, N, 1, N. Refer to User's Manual for further detail and how to set up Ethernet Management Port.

