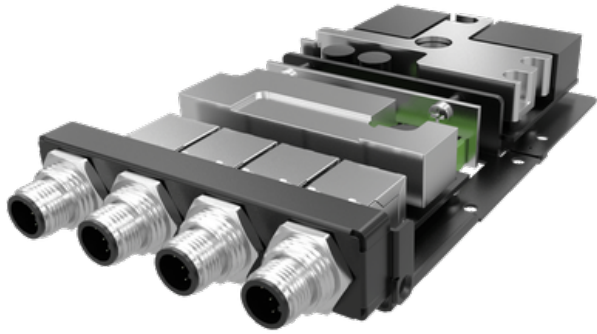




PROPRIETARY MODULE

# EBIO-4LAN-POE-M12

EDGEBoost I/O Module with 4x PoE M12 Ports



## Features

EDGEBoost I/O module supporting 4x locking GbE M12 LAN ports for industrial environments that require ingress protection from dust, debris, shock and vibration. Optional Power over Ethernet support is also available through an additional add-on module

- 4x 1GbE PoE M12 Ports
- Support Power over Ethernet through optional PoE module (up to 25.5 watt per port)
- Intel® Ethernet Controller I210
- PCIe x1 Gold Fingers Interface (PCIe 3.0 x1 Performance)
- Complies with IEEE 802.3at
- Occupies x1 EDGEBoost Bracket

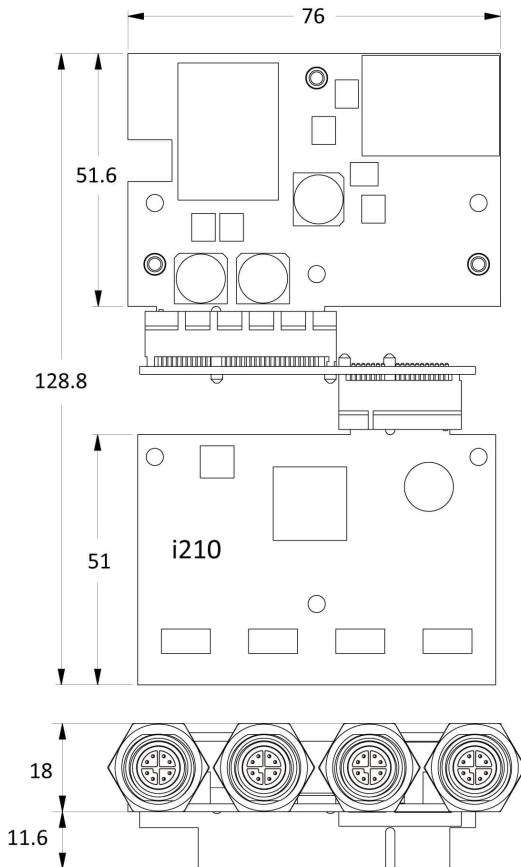
## Specifications

LAN Chipset	Intel® Ethernet Controller I210
Interface	PCIe x1 gold finger (PCIe 3.0 x4 performance)
Additional I/O	4x M12 X-code 8-Pin, Female Ports
I/O Bracket	Occupies x1 EDGEBoost Bracket
Power Output	Up to 25.5 Watt per port
Special Features	Power-Over-Ethernet
Standards and Certifications	Complies with IEEE 802.3at UL, CE, FCC Class B

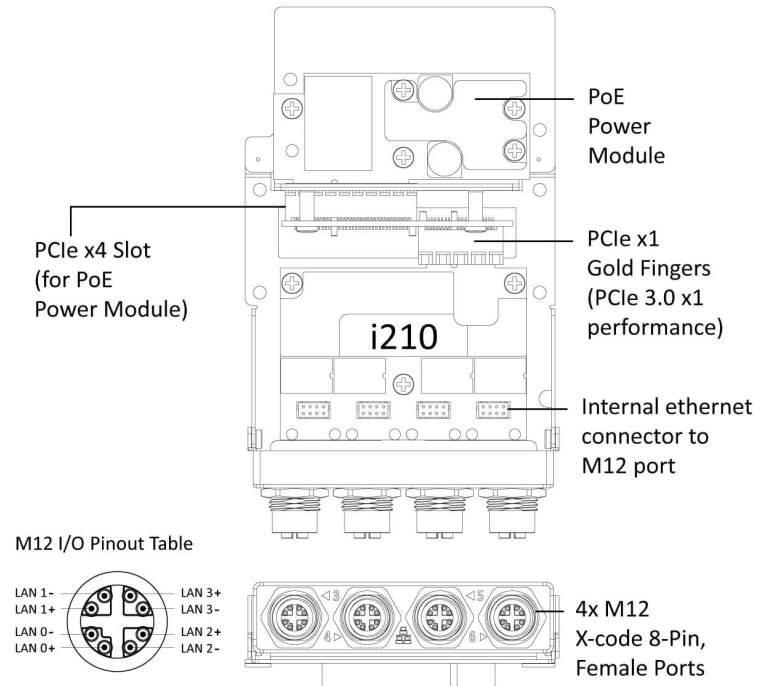
## Available Models

- PSENETRA3000-4P-M12  
EBIO, 4 x GbE PoE, M12 (RCO-3000-KBL-U)
- PSENETR6000-4P-M12  
EBIO, 4 x GbE PoE, M12 (RCO-6000-KBL)

## Dimension (Unit: mm)



## External I/O Mechanical Layout



\* All specifications and photos are subject to change without notice.



## RCO-6000-KBL Industrial Computer with 7th Gen Intel® Core™ Processor

The RCO-6000-KBL series is designed for real-time AI data processing at the edge. Suitable for Industry 4.0 industrial automation, surveillance, and other key industries that require AI workload consolidation.

- 7th Gen Intel® Core™ Processor
- Max. 32GB DDR RAM
- 4x SATA SSD Bay (2x External Hot-Swappable, 2x Internal)
- 2x EDGEBoost Bracket

[See Product](#)



## RCO-3000-KBL-U Small Form Factor Computer with 7th Gen Intel® Core™ U Series Processor

The RCO-3000-KBL-U series provides dependable performance for challenging edge computing environments through its compact and ruggedized design.

- 7th Gen Intel® Core™ U-Series Processor
- Max. 16GB DDR4 RAM
- 2x SATA SSD Bay (1x External Hot-Swappable, 1x Internal)
- Dual External SIM Slots
- 1x EDGEBoost Bracket

[See Product](#)