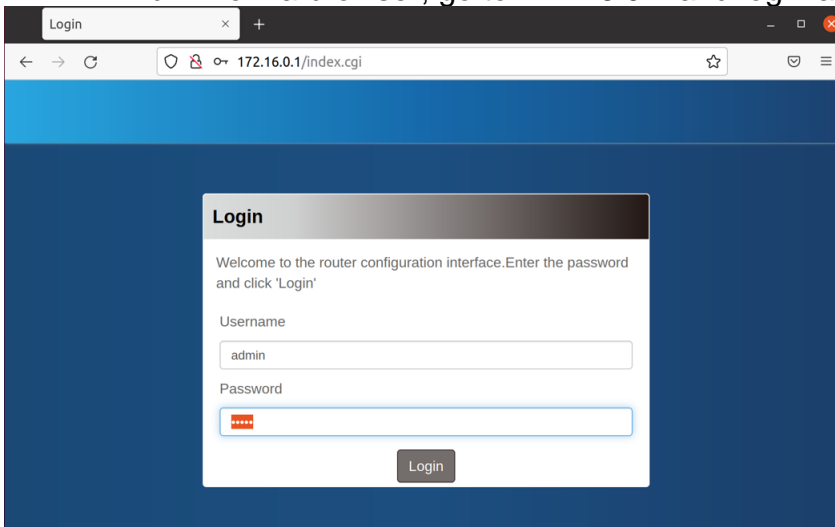


Follow the steps below to configure the AMIT LTE modem with your SIM card

1. Determine if your unit comes with an external SIM slot
  - a. If yes, go to section 1.0 on how to configure the modem with an **EXTERNAL** SIM slot
  - b. If no, go to section 2.0 on how to configure the modem with an **INTERNAL** SIM slot
2. To find the modem's IMEI number, go to section 3.0
3. See attached PDF file for the complete AMIT user's manual

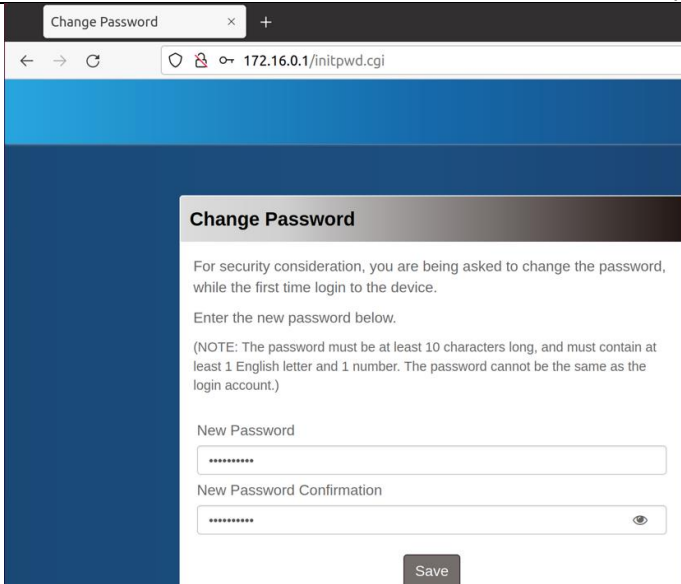
## 1.0 SIM Card Installation For External SIM Slot

1. Check to determine if the unit comes with an EXTERNAL SIM slot
2. If an external SIM slot is present, you will need to configure the LTE modem for external SIM slot usage
  - a. Power up the unit and boot into the OS
  - b. From a browser, go to 172.16.0.1 and login as **admin/admin**



- c. It will prompt you to change the default admin password. Note the new password requirement below:





Change Password


For security consideration, you are being asked to change the password, while the first time login to the device.

Enter the new password below.

(NOTE: The password must be at least 10 characters long, and must contain at least 1 English letter and 1 number. The password cannot be the same as the login account.)

New Password

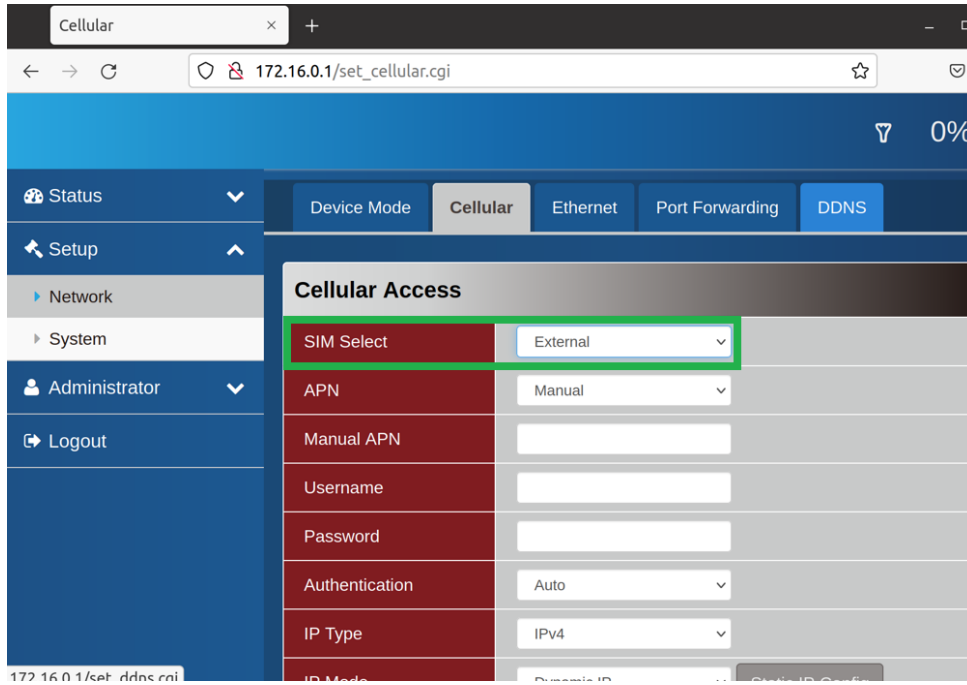
New Password Confirmation

Save



d. To configure the SIM slot to external, go to Setup / Network / Cellular; change SIM Select to External and click on SAVE at the bottom:



- e. Power off the unit and **DISCONNECT THE POWER CORD**
- f. Locate the SIM slot on the unit and insert the SIM card
- g. Reconnect the power cord and power on the unit



## 2.0 SIM Card Installation For Internal SIM Slot

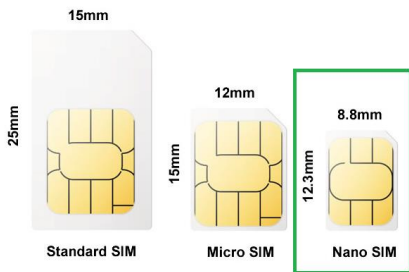
1. If your unit does not come with an external SIM slot, you will need to install the SIM card internally to the modem
2. Consult the user's manual on how to open up the unit to get access to the LTE modem
3. Locate AMIT modem and the 1x screw; note, there may be 2x screw on some unit



4. Carefully lift up the modem to detach it from the bottom mPCIe carrier board:



5. The modem requires a nano SIM as shown below:

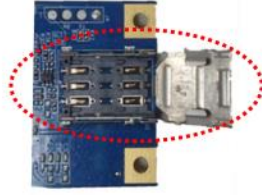


6. The SIM slot is located at the bottom of the modem:

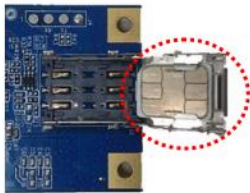
**Step 1: Push SIM Holder**  
Push top cover of the SIM holder



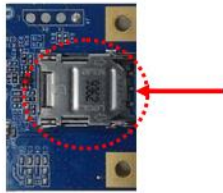
**Step 2: Raise-up SIM Holder**  
Raise-up the top cover of the SIM holder



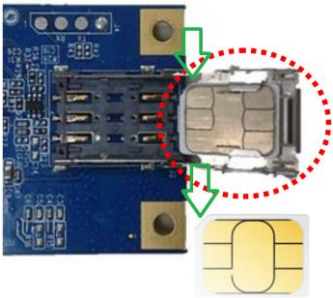
**Step 3: Insert SIM**  
Insert the SIM card to the SIM holder.



**Step 4: Lock down SIM Holder**  
and push the top cover back



7. Note the alignment of the notch on the SIM card into the SIM slot during installation



8. Re-install the modem back to the mPCIe carrier board and re-install the screw(s)

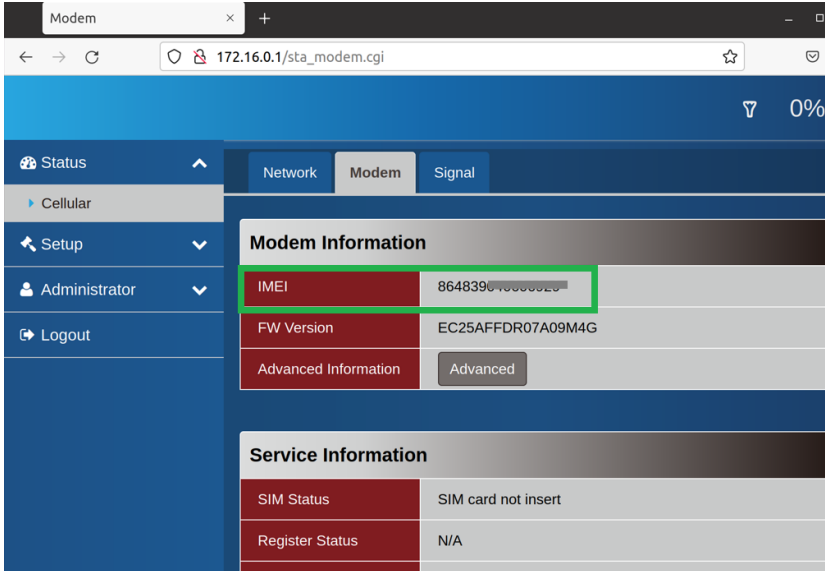


9. Close up the unit



### 3.0 IMEI Number

1. Some carriers may require the modem's IMEI number to be associated with the SIM card's number
2. To find the modem's IMEI number, login via the webGUI and go to Status / Cellular / Modem:



## 4.0 Appendix

1. This module does NOT support fail-over with multiple SIM; only one SIM could be supported at a time
2. eSIM is NOT supported
3. GPS is supported, but will require an additional external GPS antenna to enable it

